

Academic Engagement

BLHS is a school - a place where students come to learn! Our goal is for 100% of students to graduate, be prepared for life after high school, and for every student to reach their potential.

Consequences for not following:
Varying levels - lunch detention to suspension - progressive



Academic Engagement

Non Examples

- Texting in class
- Sleeping
- Tardy & excessive absences
- Off task conversation
- Opting out
- Repeated reminders to participate
- Plagiarism
- Disruptive behavior
- Misuse of technology
- Failing classes

Examples

- Completing homework
- Good attendance (90% or more)
- Asking valuable questions
- Participating in discussions
- Effective use of PRIDE Time
- Getting help when struggling
- Studying
- Working with partners

Academic Engagement Scenario

reference Student Handbook pages 25 - 28

- **Johnny is texting in class even though it is against the teacher's rules.**
 - The teacher has classroom consequences that may include taking the phone, giving it to the office, and you may pick it up at the end of the day.
- **Sally didn't sleep well last night and fell asleep in class.**
 - Step 1: Teacher and student will talk and problem solve in needed (4 CKHs questions)
 - Step 2: Teacher will contact home
 - Step 3: administrator problem solve and/or discipline
- **What POWER values does Academic Engagement fall under?**
 - Perseverance, Ownership, Work Ethic, Engagement



Be and Start on Time



This is an essential skill!!!

To hold a job - you need to start on time

To catch a plane - you need to be there on time.

To make a doctor appointment - you need to be there on time.

Job interviews - BE ON TIME!

Being late not only impacts you - but everyone else - because the teacher takes time to catch you up! Late 2 minutes to a class twice a week = approximately 2.5 hours of missed education in a year!

Consequences for not following:

Varying levels - lunch detention to suspension - progressive

Be and Start on Time

Non Examples

- Late for class, tardy
- Arrive at school at 7:30
- Out of seat, chatting with friends after the beginning class bell
- Sitting w/out class materials ready
- Texting when class begins
- In the hall when class begins

Examples

- In seat, ready to learn when beginning class bell rings
- Early is the new “on time”
- Hallway conversations finished when bell rings
- At school & in class by 7:25
- Focus on the teacher when the bell rings
- Cell phone put away
- Backpack off desk, materials out

Be and Start on Time Scenario

reference Student Handbook pages 25 - 28

- The tardy bell rings to signal the start of 1st period, but you aren't in class. This is your second tardy.

- PAW, lunch detention

PAW - You need to go to Student Services, get assigned a lunch detention, and get a note to get into class.

- Susy skips 4th period so she can have an extended lunch time.

—

- What POWER values does Academic Engagement fall under?

—



Be and Start on Time Scenario

reference Student Handbook pages 25 - 28

- The tardy bell rings to signal the start of 1st period, but you aren't in class. This is your second tardy.
 - PAW, lunch detention
- Susy skips 4th period so she can have an extended lunch time.
 - Unexcused absence, school discipline starting with After School Detention, progressive
- What POWER values does Academic Engagement fall under?
 - Ownership, Work Ethic, Engagement, Respect,



Appropriate Behavior

BLHS is the world's greatest high school.

There are different behavioral expectations at Church, home, hanging out at a friend's house, at the movies, playing ball on the football field, etc..... and people act accordingly in each setting.

School behavior supports a positive learning environment & does not disrupt learning.

**Consequences for not following:
Varying levels - lunch detention to suspension - progressive**

Appropriate Behavior

Non Examples

- Texting friends or using social media during class
- Public displays of affection
- Under the influence....
- Profanity & Disruptive behavior
- Messing around / disrespecting a guest teacher
- Not following directions
- Vandalism / graffiti

Examples

- Following all reasonable requests
- Respecting differences of others
- School appropriate language
- Being where you are supposed to be
- Working in class
- Leaving your lunch table free of trash

Appropriate Behaviors

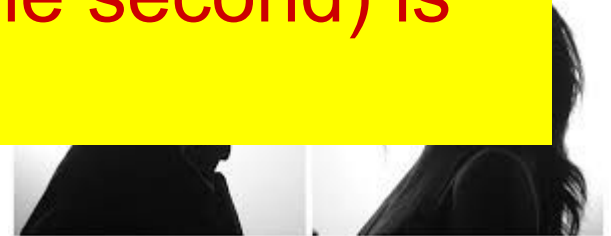
reference Student Handbook pages 25 - 28

- Jan sends Julie a text message telling her she better watch out if she doesn't stay away from her boyfriend. Julie gets other

Embraces should not last more than 2 seconds - otherwise inappropriate.

Kissing - a peck is just fine. More than one or a prolonged kiss (over one second) is inappropriate

- What POWER values does Appropriate Behaviors fall under?



Appropriate Behaviors

reference Student Handbook pages 25 - 28

- Jan sends Julie a text message telling her she better watch out if she doesn't stay away from her boyfriend. Julie gets other text messages from her friends that Jan is "out to get her". Julie doesn't want to come to school now and everyone is talking about it.
 - Disciplinary actions pending the circumstances and severity
- A couple has been warned to several times against PDA.
 - Progressive discipline
- What POWER values does Appropriate Behaviors fall under?
 - Engagement, Respect, Ownership



Compliance



All societies have rules - which are designed to bring order and keep people *safe* - such as the speed limit. If the rule is not followed - then there is a consequence - such as a ticket. Our rules are to keep you safe and there are progressive consequences when they are not followed.

Intentionally or habitually refusing to follow the rules is non-compliance / insubordination. For example - refusing to pull over for a police officer when caught speeding results - at a minimum - being arrested! Here at BLHS - refusing to follow any reasonable request from any staff member

**Consequences for not following:
Suspension - progressive**

Compliance

Non Examples

- Giving a false name
- Refusing to turn over cell phone when caught using it in class & the teacher asks for it
- Refusing to leave class when asked
- Multiple dress code violations
- Refusing to go to PAW
- Not attending after school detention

Examples

- Follow directions of ALL staff members
- When you do not agree - follow directions first - ask for clarification later when appropriate
- Follow dress code
- Identify yourself when asked by a staff member
- Move to a different seat when asked by the teacher

Compliance

reference Student Handbook pages 25 - 28

- A teacher made a reasonable request asking a group of students to stay after class because they were being disruptive. One of the students walked out of class at the end of the period stating, “I don’t have to stay. I’m not going to be late to my next class.” Then he left; The rest of the students stayed.
 - Suspension
- In the hallway, the teacher asked a student what her name was after seeing her talk harshly to another student. The student refused to tell her, stating she didn’t have to tell her anything.
 - Suspension
- What POWER values does Compliance fall under?
 - Ownership, Work Ethic, Engagement, Respect



Safety

Safety is our #1 concern! Students must feel safe in order to learn. Every expectation / rule is built around safety and keeping a positive learning environment.

Parents expect staff to keep their kids safe. Students expect for school to be a safe place to be!

BLHS is the World's Greatest High School and everyone has a responsibility to maintain our safe/positive learning environment.

Consequences for not following:

Varying levels - lunch detention to suspension to expulsion - progressive

Safety



Non Examples

- Under the influence
- Fighting
- Throwing things off the rail
- Bullying / harassment - cyber included
- Not following directions
- Being in the parking lot at lunch or between classes
- Bringing a weapon to school
- Promoting a fight or running to see a fight
- Leaving campus for lunch

Examples

- Be where you are supposed to be
- Follow staff directions - reasonable requests
- Get help from a counselor when experiencing peer problems
- Resolve conflicts in nonviolent ways
- Respect differences and reflect it through words and actions
- Slow, careful driving in parking lots

Safety

reference Student Handbook pages 25 - 28

- **A student comes to school under the influence for the first time.**
-
- **There is a fight in a classroom. Both boys are throwing punches. One of the boys clearly started it and was the aggressor. The aggressor has been in trouble one other time for fighting.**
-
- **A student throws something over the railing for the 2nd time.**
-
- **What POWER values does Safety fall under?**
-



Safety

reference Student Handbook pages 25 - 28

- **A student comes to school under the influence for the first time.**
 - 10 day suspension, reduced to 5 with participation in treatment.
- **There is a fight in a classroom. Both boys are throwing punches. One of the boys clearly started it and was the aggressor. The aggressor has been in trouble one other time for fighting.**
 - 3 days suspension for 1st fight
 - 6 days suspension for second fight
 - 1 extra day for being the aggressor
- **A student throws something over the railing for the 2nd time.**
 - Short term suspension
- **What POWER values does Safety fall under?**
 - **Ownership, Engagement, Respect**



Electronic Use

Many schools have a “do not see or use cell phones during the school day” policy. BLHS does not have this policy. We believe that students are very capable of using their technology when appropriate as well as know when to put it away so it does not disrupt the educational environment.

Each teacher has their own expectations as to technology use in their classroom and what they will do if their expectations are not followed.

Consequences for not following:

Classroom consequences can range from warning, to confiscation, to detention. If your phone is confiscated and turned in to the main office, you may pick it up at the end of the day.

Electronic Use

Non Examples

- Texting in class
- Using social media
- Listening to music on the sly
- Going to inappropriate web pages
- Using another student's account
- Hacking teacher gradebooks
- Send hate email
- Taking pictures in the locker room

Examples

- Using chrome book to do class work
- Using phone when you have permission from the teacher
- Email teacher about school related things
- Research on a school project
- Texting & social media during passing & lunch



Electronic Use

Reference Student Handbook pages 25 - 28

- **A teacher made a reasonable request asking the student to put away her phone several times over the last month. Picking up the phone by the end of the day wasn't working and has now turned into an non-compliance issue.**
 - **Suspension**
- **Students are supposed to be working in Google Docs on an assignment together, but instead, they are looking up football stats on the Seahawks after last night's game. This is the 2nd time the teacher has caught them doing this.**
 - **Possible denial of computer privileges, Wed/Thurs school**
- **What POWER values does Electronic Use fall under?**
 - **Ownership, Engagement, Respect**

Closed Campus

Closed campus means students need to stay on campus for the duration of the school day. Off campus is defined as those areas past the sidewalk surrounding the immediate building or unauthorized areas such as parking lots, exterior stairwells (except in the case of an emergency), fire lanes, areas in front of or behind the gym, etc.

Once students have arrived on campus they may not leave until the end of the school day unless excused and checked out through the Main Office. Students cannot be excused to leave campus for breakfast or lunch

**Consequences for not following:
Varying levels - lunch detention to suspension - progressive**

Closed Campus

Non Examples

- Running to your car between classes to get a book
- Taking a walk on the trails at lunch
- Running to McDonalds any time of the school day
- Leaving campus to go to an appointment w/out signing out at the main office.

Examples

- If you need to run to your car, get G or Q to take you
- Be where you are supposed to be
- Eat lunch in the cafeteria
- Sign out in the main office when leaving campus to go to an appointment in the middle of the day
- Bring all necessary supplies into school, don't use your car as a locker!

Closed Campus

Reference Student Handbook pages 25 - 28



- **A student goes to their car in the parking lot (which is considered an off campus area) to get something they forgot; a staff member stops them as they are coming in for the 3rd time.**
 - **1 day suspension and loss of parking privileges for 90 days**
- **Must have Starbucks to stay awake, so at lunch time you make a run. On the way back in, a staff member stops you and you have never been caught before but someone else in your car has been caught 3 times already this year.**
 - **1st time offender: parent contact, Wed/Thurs School**
 - **3rd time offender: 3-5 day suspension; progressive discipline**
- **What POWER values does Closed Campus fall under?**
 - **Ownership, Engagement, Respect**

Dress Code

Different types of clothing are appropriate and worn for different types of activities and places such as work, home, out with friends and at school. In order to facilitate learning for all students, we ask that student dress and appearance follow health and safety standards and not cause a disruption to the learning environment. Appropriate attire is expected at all times while on school grounds and at all school sponsored activities.

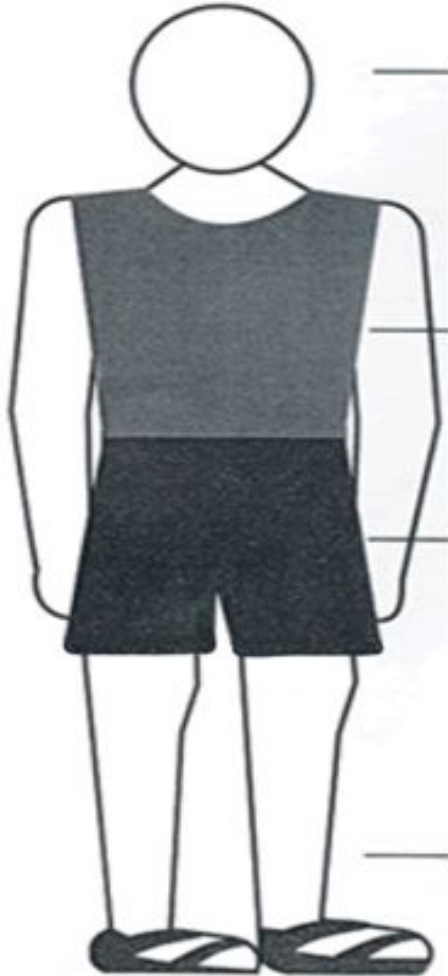
The dress code was just reviewed and updated by a group of students, parents, and district employees. It is designed to help create an educational environment where all students feel comfortable.

Consequences for not following:

Change your clothing, cover up, or go home to get appropriate clothing.

Repeated Dress Code violations will be considered non-compliance

Dress Code



Students must remove all headwear while in the buildings. Headwear includes hats, hoods, bandanas and other non-religious head coverings. Appropriate headwear may be worn for after school events.

Clothing must fully cover stomachs and chests.

Shorts, skirts, and dresses may appear no shorter than the end (tips) of the fingertips (shoulders relaxed, arms extended straight down sides).

Footwear must be worn at all times and must be appropriate for the activity.

Dress Code

The following appropriate attire expectations also apply:

- Undergarments must be covered and are encouraged.
- Holes, tears, mesh or other see through materials in garments may not be in areas that clothing is required to cover.

NON - Examples



NO

YES



Tights worn under the jeans would make these jeans acceptable.

Dress Code

The following appropriate attire expectations also apply:

- Undergarments must be covered and are encouraged.
- Holes, tears, mesh or other see through materials in garments may not be in areas that clothing is required to cover.
- Clothing or other items that promote drugs, alcohol, tobacco, violence, weapons, gang affiliation or activity, is sexually suggestive, or displays content that unreasonably disrupts the educational process or school environment is prohibited. **Bandanas are not allowed.**

NON - Examples



You may like these,
however – they are
just NOT appropriate
here at school!



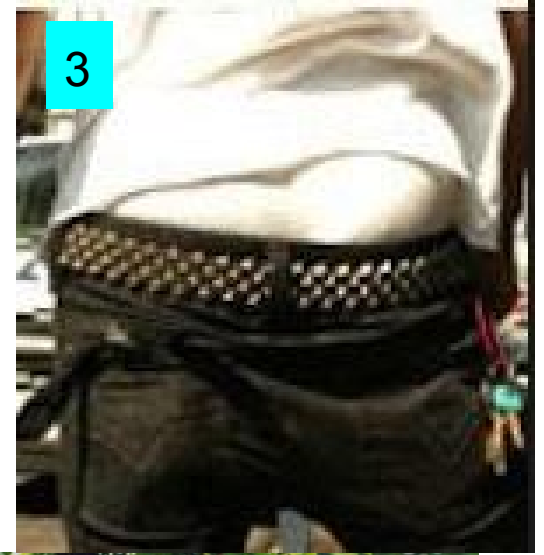
Dress Code

The following appropriate attire expectations also apply:

- Undergarments must be covered and are encouraged.
- Holes, tears, mesh or other see through materials in garments may not be in areas that clothing is required to cover.
- Clothing or other items that promote drugs, alcohol, tobacco, violence, weapons, gang affiliation or activity, is sexually suggestive, or displays content that unreasonably disrupts the educational process or school environment is prohibited. Bandanas are not allowed.
- **Sleep wear is not appropriate school dress, including blankets.**
- Sunglasses are not allowed to be worn in any school building (safety issue).
- Jewelry that can pose a safety hazard is prohibited (safety issue).

Dress Code Scenario

Reference Student Handbook pages 25 - 28



NON

amp

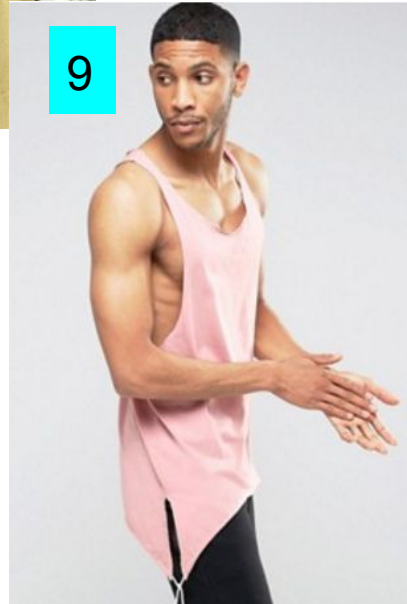
Dress Code Scenario

Reference Student Handbook pages 25 - 28

- 1) exposed chest - cleavage
- 2) exposed stomach
- 3) underwear showing
- 4) shorts too short, exposed body under shirt
- 5) shorts too short, no hoods in school
- 6) no hats in school - the shirt is acceptable

Dress Code Scenario

NON - Examples



Dress Code Scenario

Reference Student Handbook pages 25 - 28

- 1) exposed chest - cleavage
- 2) exposed stomach
- 3) underwear showing
- 4) shorts too short, exposed body under shirt
- 5) shorts too short, no hoods in school
- 6) no hats in school - the shirt is acceptable
- 7) no hats in school
- 8) no hats in school
- 9) exposed chest & body under shirt
- 10) underwear showing

Dress Code Scenario

Reference Student Handbook pages 25 - 28

Consequences:

- Change clothes
- Repeated offenses, Change clothes and non-compliance disciplinary actions

Hats Consequences:

- Confiscated, pick up from the office at the end of the day.

What POWER values does the Dress Code fall under?

- **Ownership, Engagement, Respect**